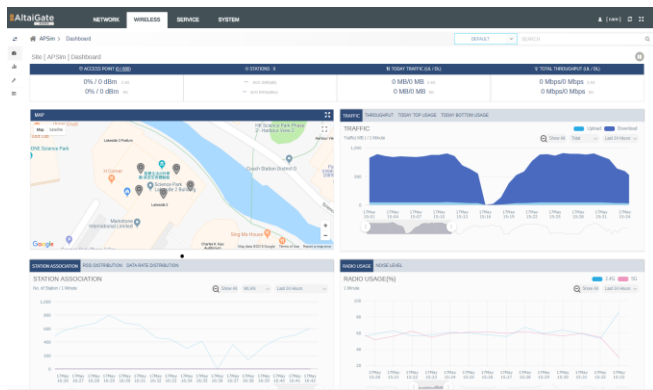


### AltaiGate 200 Smart WLAN Controller

With a central processor that employs up to four cores, each with two threads, the AltaiGate 200 is like having a total of 8 virtual CPUs. Its powerful hardware allows it to manage up to 200 Altai Super WiFi access points and 4,000 client devices from a single location.

Ease of use is the main design goal of AltaiGate 200. An entire Wi-Fi network can be set up quickly via its web-based configuration interface; furthermore, it can be deployed within any Layer 2/3 network. Altai Super WiFi access points then automatically connects to the AltaiGate. As a result, Wi-Fi network deployment can be done in a truly plug-and-play manner.

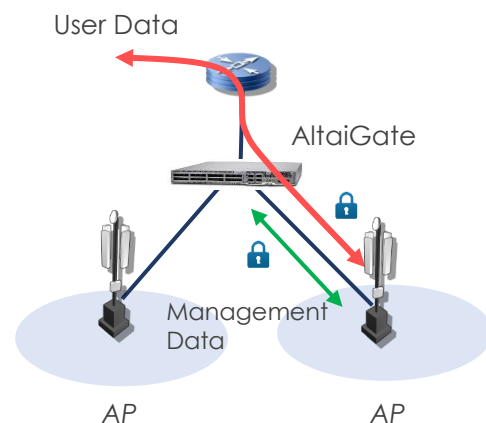


Once up and running, the AltaiGate 200 automatically manages the Wi-Fi network. Configuration changes can be applied to multiple APs or the entire network. Moreover, a customizable dashboard provides a comprehensive network snapshot and allows IT staffs to trouble-shoot any problems easily.



The AltaiGate 200 supports enterprise-grade 802.1x with any backend authentication databases such as RADIUS. Secure access services are provided via hotspot and guest networking services, role-based user policies, and per-user rate-limiting.

Both centralized and distributed forwarding architectures are supported by AltaiGate 200.



### Key Features and Benefits

- **Best value in price/performance** Support up to 200 APs and 4,000 client devices at an affordable cost.
- **Ease of Use** Web-based configuration interface allows Wi-Fi network to be set up quickly; Altai Super WiFi APs discover the AltaiGate automatically.
- **Smart Access Services** Smart access features such as hotspot, guest access, social media login such as Facebook and Google allows quick setup for secured private network access or easy monetization of hotspot services.
- **Intelligent network security** Support enterprise-grade 802.1x with any backend authentication databases such as RADIUS and Active Directory.
- **Advanced RF management** Support advanced RF management features such as rogue AP detection, auto channel, and TX power control.
- **Flexible deployment** Support centralized and distributed forwarding architectures maximizes deployment flexibility.

### Physical Specifications

- Dimensions 1RU: 438 mm (W) x 422 mm (D) x 44 mm (H)
- Weight 9.0 kg
- Power 250W AC Power Supply or 300W 1+1 Redundant AC Power Supply
- Network Interface 4 x 1GbE ports (data)  
1 x 1GbE port (management)  
1 x 1GbE port (high availability)
- Op. Temperature 0 °C to 40°C
- Storage Temperature -20 °C to 70°C
- Humidity 5 to 90%

### Capacity

- Managed APs 200 (Max.)
- WLANs 1,000 (Max.)
- Concurrent Clients 4,000 (Max.)

### Network Architecture

- Centralized Supported
- Local Breakout Supported

### Networking

- IP IPv4 and IPv6 dual-stack\*
- Routing OSPF\*
- VLAN 802.1q  
Dynamic VLAN\*
- DHCP Server Supported
- Redundancy 1 + 1 with auto-synchronization

### AP Management

- Interface Web  
CLI  
SNMP v2, v3\*
- AP Provisioning Batch provisioning  
Configuration checking  
Auto software upgrade
- Historical Report Supported
- RF Management Auto channel selection\*  
Auto power control\*  
Interference detection\*  
Client load balancing\*

### Access Services

- Hotspot Hotspot 2.0\*  
WISPr\*
- Captive Portal Guest Login  
Social Login (Facebook and Google)  
User Sign-Up  
Prepaid / Subscription Login
- CoA Supported\*
- Monthly User Report Supported\*

### Quality of Service

- 802.11e/WMM Supported
- Traffic Prioritization TOS-based  
VLAN-based
- Bandwidth Control Per user  
Per WLAN

### Security

- Standards WPA  
WPA2  
802.11i
- Encryption WEP  
TKIP  
AES
- Authentication 802.1x  
MAC address-based
- User Database Internal  
External: RADIUS, Active Directory
- User Access Control L2 (MAC address-based)  
L3/4 (IP and protocol-based)  
L2 client isolation  
Rogue AP detection\*  
DoS attack prevention\*  
AP spoofing detection\*  
Ad hoc detection\*  
Password guessing protection\*
- WIPS

### Wireless Standards

- IEEE 802.11a, 802.11b, 802.11g,  
802.11n, 802.11ac, 802.11r,  
802.11k, 802.11v, 802.11d,  
802.11e, 802.11u\*

### Certification

- CE / FCC / Others
- RoHS2 Compliance

### Product Ordering Information

#### AltaiGate 200 (Part No.: SD.GA-0200-00)

- AltaiGate 200 with AC power supply, licensed for up to 50 Altai access points (with AP license upgrade, can support up to 200 APs)

#### AltaiGate 210 (Part No.: SD.GA-0210-00)

- AltaiGate 200 with 1+1 Redundant AC power supply, licensed for up to 50 Altai access points (with AP license upgrade, can support up to 200 APs)

#### Contact Us

- Email: [sales@altaitechnologies.com](mailto:sales@altaitechnologies.com)

AG200-PB-210712

\*Will be available in the future

Note: Specifications are subject to change without notice