

BreezeAIR Advanced Mounting Kit

Advanced mounting Kit - Wall/pole mount, azimuth & elevation

B-ADV-MK Features

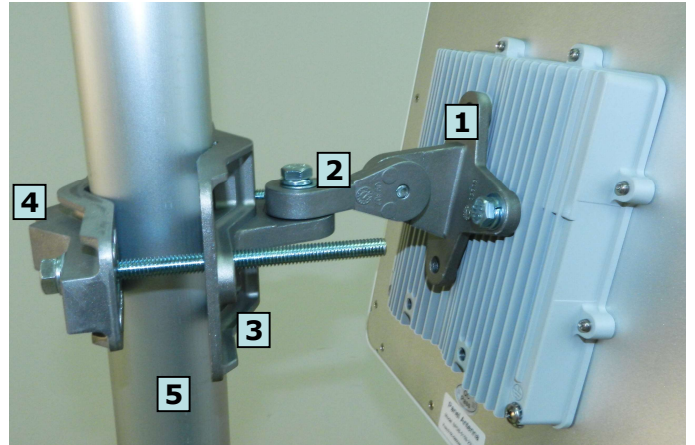
- BreezeAIR's Azimuth and Elevation Adjustable Mount
- Suitable for pole or wall mounting
- Made of Die Cast Aluminum
- Heavy duty

Specifications

Material	Aluminum
Kit Weight	0.750 Kg
Diameter range	1"-4"
Movement Possibility	Azimuth $\pm 45^\circ$ Elevation $\pm 45^\circ$

Packing list

Item	Qty	Description
1	1	B-MK1 (End Mounting Member)
2	1	B-MK2 (Middle Mounting Member)
3	1	B-MK3 (base Member)
4	1	B-MK4 (Back Member)
5	1	Pole 1"-4" (not supplied)
6	6	Helical Spring Lock Washer 5/16
7	6	Plain Washer 5/16
8	4	Hex Cap Screw 5/16-18 x 1"
9	2	Hex Cap Screw 5/16-18 x 5"



Installation

- Place B-MK1 (1) on the unit, as illustrated in the picture. Align the holes with the screw studs.
- Connect B-MK1 (1) to the unit with spring washers (6), plain washers (7) and screws (8). Tighten the screws at a torque of 30 Lbs-In.
- Connect B-MK2 (2) to B-MK1 (1) with spring washer (6), plain washer (7) and screw (8). Leave the screw slightly loose.
- Connect B-MK3 (3) to B-MK1 (2) with spring washer (6), plain washer (7) and screw (8). Leave the screw slightly loose.
- Attach B-MK3 (3) and B-MK4 (4) to the pole (5) as illustrated, and connect them using spring washers (6), plain washers (7) and screws (9). Close screws (9) together (in turns), up to tightening torque of 30 Lbs-In.
- Distance between ends of B-MK3 (3) and B-MK4 (4) on both sides must be equal. No skewness is allowed.
- Adjust the desired angle, and fully tighten the loose screws (of B-MK2) at a torque of 30 Lbs-In.