



# WIScloud Access Point

## Outdoor series

Models: WCAP-Outdoor / WCAP-AC-Outdoor / WCAP-AC-OS

The WisCloud Access Point is the innovative series of products with remarkable performance in their features. All configuration and management is centrally and effectively operated by the same set of WisCloud Controller. It would be much easier to monitor the massive APs and more efficient to maintain the enterprise networks.

### WISNETWORKS TECHNOLOGIES CO., LTD.

Address: No.77, FuTe West 3 Road, China (Shanghai) Pilot Free Trade Zone

E-mail: [info@wisnetworks.com](mailto:info@wisnetworks.com)

Web: [www.wisnetworks.com](http://www.wisnetworks.com)



## Integrated Fit AP + AC Architecture

WisCloud Controller is refined designed to suit all Wisnetworks enterprise class AP equipments. A single controller can centrally supervise and manage the WiFi networks and multiple, distributed APs could be taken care and work in a more effective way.

## Easy-to-use Interface

No special training is required to operate the controller system. The main parameters of one/multi-WLAN networks is available on the dashboard. Simple design would also help to easily realize the real-time status monitoring and customized configurations.

## One minute network configuration

Using the intelligent centrally management between Ac and AP can quickly synchronize wireless configuration into each AP to complete a unified construction of the wireless network.

## Powerful and Various APs Optional

The wireless speed of WisCloud AP varies from 300Mbps to 1167Mbps due to different requirements. The diverse tx power, antenna gain and installation method of AP features can adapt to different environments.

## Remarkable Performance

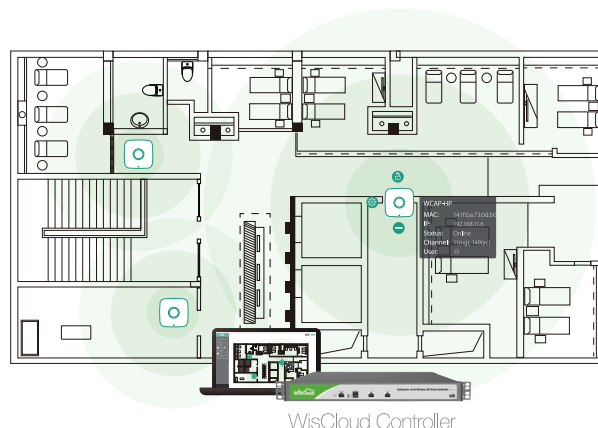
WisCloud AP possess enterprise class features and outstanding characters . Comparing to the same performance products in the market, WisCloud AP has significantly competitive price.

## On-site & Cloud Management

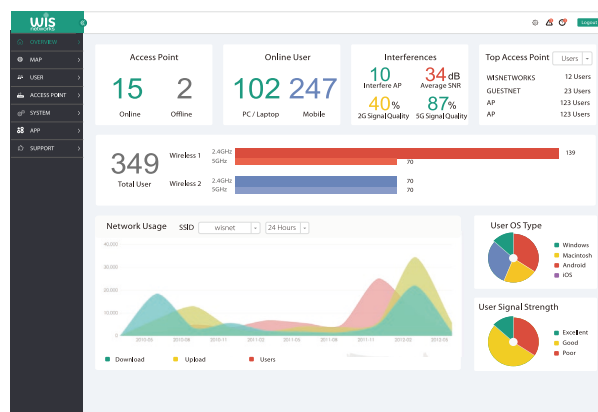
The controller hardware can be installed either in networking room/rack or in the cloud bundled with software for local or remote management.

## Unlimited AP Numbers

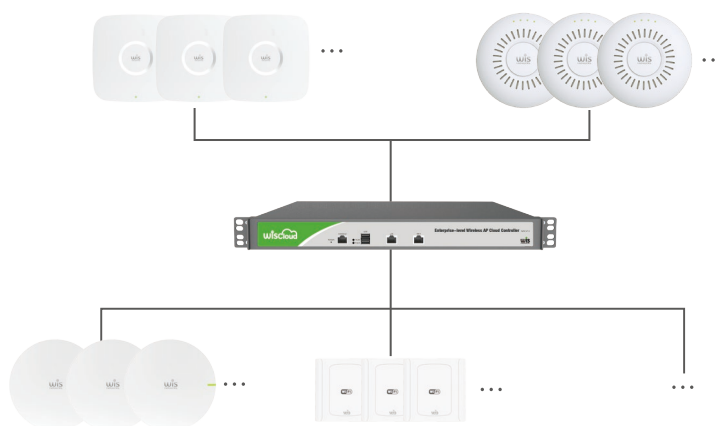
Unlimited AP numbers controlled by WisCloud controller would provide best experience for customers to plan and expand the WLAN networks.



Integrated Fit AP + AC Architecture



Easy-to-use Interface



One Wiscloud Controller Supports for Unlimited AP Numbers

# WisCloud AP Features

## Enterprise Level Radio Chipset

The high speed 720MHz Atheros CPU and 128MB DDR makes WisCloud access points much powerful to provide a stable connectivity and multifunctional wireless networks.

## Supports Fat AP & Fit AP Mode

Fit AP has "zero-config" and all wireless network solution is completed by integrated fit ap and controller. While fat AP is quite perfect for users who owns a few APs, working with standalone. Fit AP is more suitable for enterprise / ISP level wireless network and massive deployment. WisCloud AP supports both alternatives.

## Easy Installation

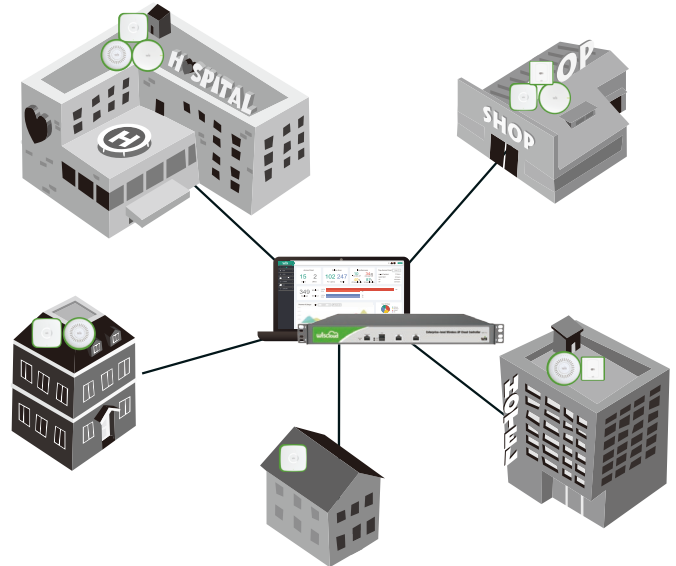
With our mounting kits, customers can easily mount it in different indoor conditions. While the AP is mounted on the ceiling or on the wall, you can avoid most interference and extend your Wi-Fi coverage.

## Support for Standard/Passive PoE

WisCloud Access Point is able to be supplied power by a power injector using 24VDC or 802.3af(48 VDC) PoE technology and make it more flexible to deploy the device in indoor ceiling environment.

## All-in-one Design

Integrating outstanding functional antenna, WisCloud Access Point is easy to provide long range outdoor coverage for all smart phone and laptops. The Lightning/ESD protection, high durable temperature range and IP6x aluminum housing make it far more robust working in harsh outdoor environment.



	WCAP-Outdoor	WCAP-AC-Outdoor	WCAP-AC-OS
<b>Frequency</b>	2.4GHz	2.4GHz & 5GHz	2.4GHz & 5GHz
<b>2.4GHz speed</b>	300Mbps	300Mbps	300Mbps
<b>2.4GHz MIMO</b>	2*2	2*2	2*2
<b>5GHz speed</b>	-	867Mbps	867Mbps
<b>5GHz MIMO</b>	-	2*2	2*2
<b>PoE</b>	24VDC	802.3af(48VDC)	802.3af(48VDC)
<b>Pole Mount</b>	√	√	√
<b>Wall Mount</b>	√	-	√
<b>Tx power</b>	27dBm	30dBm	30dBm
<b>Distance</b>	200m	250m	400m
<b>Antenna Gain</b>	5dBi	6dBi	13dBi
<b>Enclosure</b>	Weatherproof ASA	UV Outdoor Plastic	Die-cast Aluminum
<b>ESD Protection</b>	16kV	16kV	16kV
<b>Lightning Protection</b>	2kV	2kV	8kV
<b>LAN Ports</b>	1*10/100 Base-T Ethernet (RJ45 with Passive PoE)	1*10/100/1000 Base-T Ethernet (Gigabit LAN with Active PoE)	1*10/100/1000 Base-T Ethernet (Gigabit LAN with Active PoE)

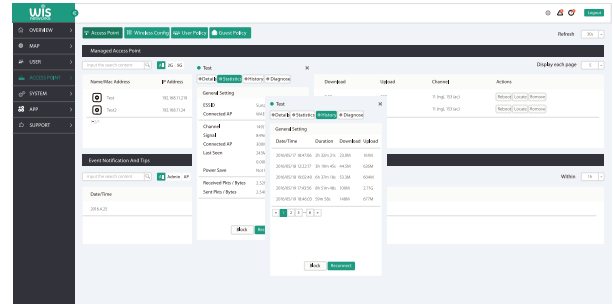
# WisCloud Controller

WisCloud Controller is a carrier grade Wireless Network Management System developed by Wisnetworks. It supports the full range of Wiscloud APs centrally management and monitoring tasks for network administrator. It is integrated powerful features to control multiple and distributed APs in a high effective approach.

## Features

### Real-time Status

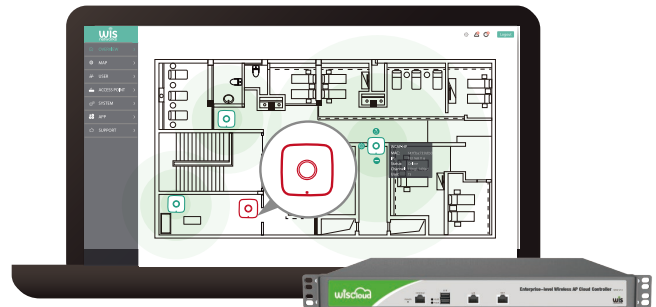
Real-time statistics provide for network online APs / users signal and interference monitoring. For network history traffic record can be traced from 24hours to 30days.



Real-time Statistics

### L2 / L3 Auto-discovery

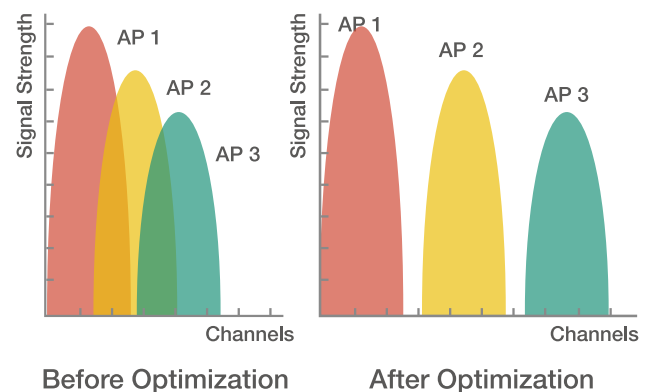
AP would be auto-detected by controller in the same WLAN network. In the condition of Layer 3 or access controller deployed in the could, using provided utility could make all AP devices being discovered by AC in few minutes.



Expedite Troubleshooting

### Wireless Map

Through wireless map function, administrator is intuitive and convenient to monitor each AP health status in the network along with the number of users and network coverage quality. For the failure of AP can be quickly positioned so as to speed up the troubleshooting.

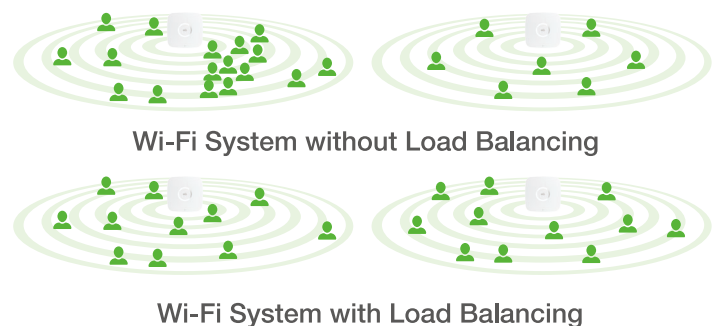


### Channel Optimization

Channel utilization makes it applicable to equip user with RF optimization possessing auto-timing function as well as manual optimization to keep the Wireless network stay in a reasonably smooth state.

### Load Balancing

Wiscloud system is equipped with intelligent user load balancing, thus making the product either applicable to the sparsely populated rural condition or hi-density population city or large conference and exhibition and ensuring each AP to work in maximum efficiency to build a stable and permanent wireless network.



# Specifications

## WisCloud Controller

Physical Characteristics	
Processor	Dual-Core 1.8GHz CPU
Memory	2GB DDR RAM
Hardisk	8G SSD
Ethernet	1*10/100/1000Mbps Data Port,1*10/100/1000Mbps Management Port
LED	Power& SSD Indicator
Other Interface	2*USB2.0,1 Console RJ-45 port
Power	Input: 110 – 240V AC,Output:12VDC/5A
Weight	2.2 kg
Temperature	Working Temperature:10℃~60℃,Storage Temperature: -20℃~70℃
Relative Humidity	5%-95%,no-condensing
Installation	Desk-top & Rack-mount
Dimension	430mm*250mm*46mm (19 inches, 1U)
Management	
Configuration	Web GUI, CLI
AP Provisioning	L2 or L3 auto-discovery,Auto online software upgrade
Traffic History	Supported
Capacity	
Managed APs	Unlimited
Concurrent Users	Unlimited
Network Architecture	
IP	IPv4 / IPv6
VLANs	802.1Q (8 BSSID per radio)
Redundancy	1+1 with auto-synchronization
Wireless	
Wireless Security	WEP, WPA-PSK, WPA-Enterprise (WPA/WPA2, TKIP/AES)
Access Control	L2 (MAC address-based), L2 client isolation
Wireless Intrusion Detection (WIDS)	Rogue AP detection
802.11e/WMM	Supported
Rate Limiting	Supported
Wlan Group	Supported
RF Management	Automatic channel and power optimization
Client Load Balancing	Automatic
Guest Access	Supported
Captive Portal	Supported
Mesh(Wireless Uplink)	Supported

# Specifications

WCAP-Outdoor

## WisCloud Outdoor Access Point

Physical Characteristics	
Processor	Atheros SoC 600MHz
Flash / Memory	64MB DDR,16MB Flash
LAN Port	1*10/100M Base-T
Button	Reset
Power	24VDC/0.75A Passive PoE
Max Power Consumption	10W
Working Temperature	-40°C~70°C
Working Humidity	10%~95% non-condensing
Dimension	164*92*32mm
Mounting	Pole Mount/Wall Mount
Certification	CE/RoHS
Wireless Characteristics	
Wi-Fi Standard	802.11n/g/b
Frequency	2.4GHz
Speed	300Mbps
Max Tx Power	27dBm
Antenna	5dBi Dual-pola Omni
Multi-SSID	up to 8 SSID Per Radio
Wireless Security	WEP, WPA-PSK, WPA-Enterprise (WPA/WPA2, TKIP/AES)
Concurrent Clients	100+
Coverage Range	200m
Advanced Characteristics	
Mode	Fat AP/Fit AP
VLAN	802.1q
Guest Policy	Web Portal/Password
MAC Filter	Blacklist
User QoS	Speed Limit by User Group
Traffic History	Duration/Download/Upload
Load Balance	Online User / Bandwidth
Wireless Uplink	Supported

# Specifications

WCAP-AC-Outdoor

## WisCloud 802.11ac Dual-Band Outdoor Access Point with Omni Antenna

Physical Characteristics	
Processor	Atheros SoC 720MHz
Flash / Memory	128MB DDR, 16MB Flash
LAN Port	1*10/100/1000M Gigabit
Button	Reset
Power	48VDC/0.32A 802.3at
Max Power Consumption	15W
Working Temperature	-40°C~70°C
Working Humidity	10%~95% non-condensing
Dimension	178×178×238mm
Mounting	Pole Mount
Certification	CE/RoHS
Wireless Characteristics	
Wi-Fi Standard	802.11ac/n/a/g/b
Frequency	2.4GHz&5GHz
Speed	1167Mbps
Max Tx Power	30dBm
Antenna	6dBi Dual-band Omni
Multi-SSID	up to 8 SSID Per Radio
Wireless Security	WEP, WPA-PSK, WPA-Enterprise (WPA/WPA2, TKIP/AES)
Concurrent Clients	150+
Coverage Range	250m
Advanced Characteristics	
Mode	Fat AP/Fit AP
VLAN	802.1q
Guest Policy	Web Portal/Password
MAC Filter	Blacklist
User QoS	Speed Limit by User Group
Traffic History	Duration/Download/Upload
Load Balance	Online User / Bandwidth
Wireless Uplink	Supported

# Specifications

WCAP-AC-OS

## WisCloud 802.11ac Dual-Band Outdoor Access Point with Sector Antenna

Physical Characteristics	
Processor	Atheros SoC 720MHz
Flash / Memory	128MB DDR, 16MB Flash
LAN Port	1*10/100/1000M Gigabit
Button	Reset
Power	48VDC/0.32A 802.3af
Max Power Consumption	15W
Working Temperature	-40°C~70°C
Working Humidity	10%~95% non-condensing
Dimension	450*650*87.5mm
Mounting	Pole/Wall Mount
Certification	CE/RoHS
Wireless Characteristics	
Wi-Fi Standard	802.11ac/n/a/g/b
Frequency	2.4GHz&5GHz
Speed	1167Mbps
Max Tx Power	30dBm
Antenna	13dBi Dual-Pola 90° Sector
Multi-SSID	up to 8 SSID Per Radio
Wireless Security	WEP, WPA-PSK, WPA-Enterprise (WPA/WPA2, TKIP/AES)
Concurrent Clients	150+
Coverage Range	400m
Advanced Characteristics	
Mode	Fat AP/Fit AP
VLAN	802.1q
Guest Policy	Web Portal/Password
MAC Filter	Blacklist
User QoS	Speed Limit by User Group
Traffic History	Duration/Download/Upload
Load Balance	Online User / Bandwidth
Wireless Uplink	Supported